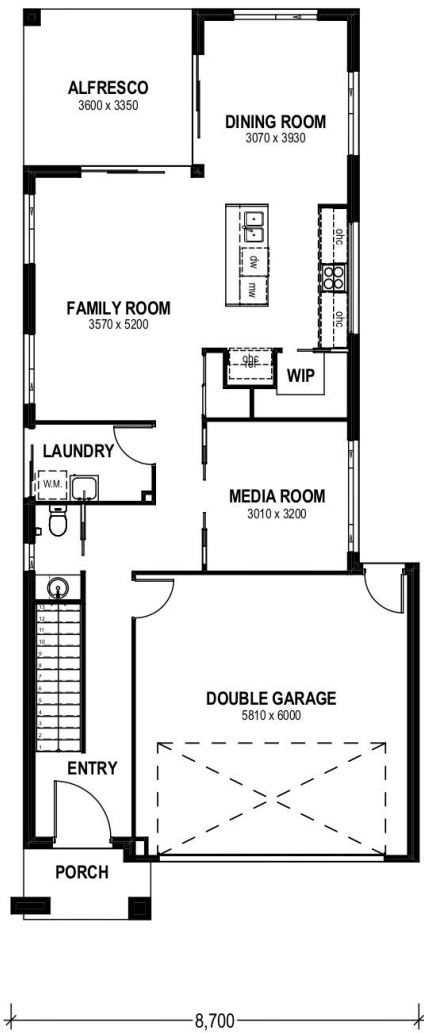


# MOSSMAN 233



## FLOOR AREAS

Lower Living	88.47m <sup>2</sup>
Upper Living	92.01m <sup>2</sup>
Garage	37.03m <sup>2</sup>
Porch	3.95m <sup>2</sup>
Alfresco	12.06m <sup>2</sup>
<b>Total</b>	<b>233.52m<sup>2</sup></b>

MIN. BLOCK WIDTH 10.5m

Width 8.700m / Length 19.435m

Entry Portico Size Will Vary  
Depending on Façade Type.

May not suit all blocks  
depending on façade type.

All Images are for illustrative purposes only and all  
dimensions are approximate



**Building the  
Queensland  
Lifestyle**

[www.invisionhomes.com.au](http://www.invisionhomes.com.au)

QBCC Licence 1089281